

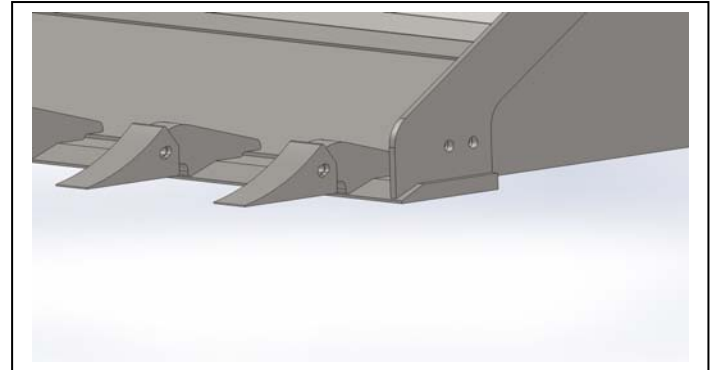
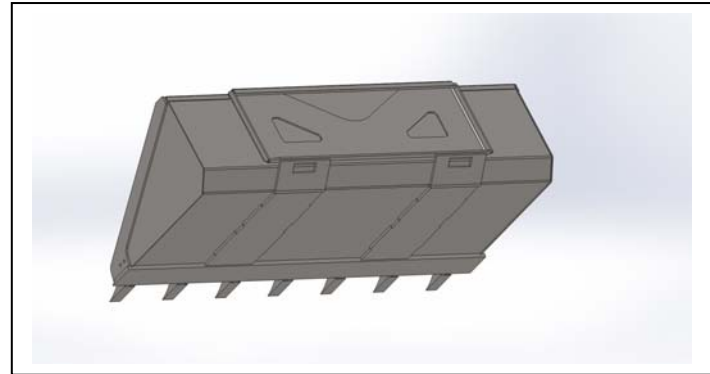
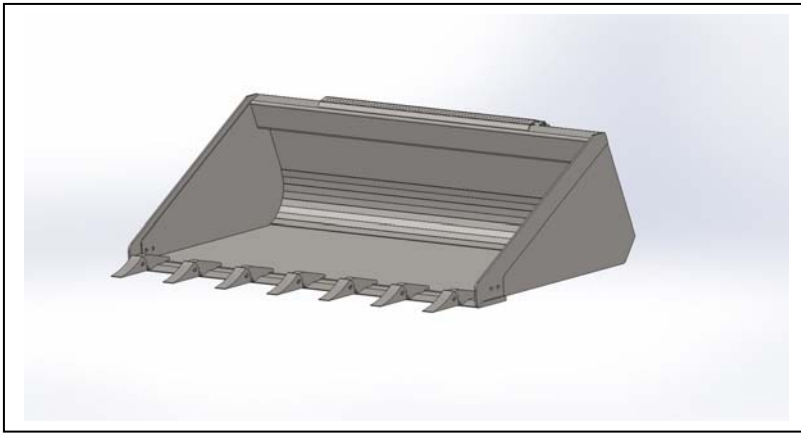


M2 ATTACHMENTS

1128 B Cormorant Ave, Detroit Lakes, MN 56501
 701-360-3544 - 855-777-3539
 M2attachments@gmail.com
 www.M2attachments.com

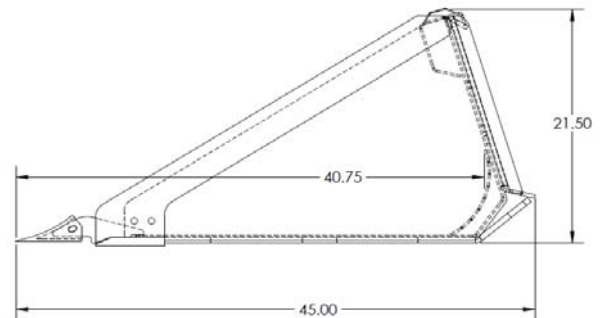
Tooth Bucket

- 60" Model #102366**
- 68" Model #102367**
- 72" Model #102368**
- 78" Model #102369**
- 80" Model #102370**
- 84" Model #102371**



Specifications

Overall Width	60", 68", 72", 78", 80", 84"
Overall Height	21½"
Overall Depth	45"
Bucket Thickness	3/16"
Side Plates	3/16"
Step Bent Insert	3/16"
Side Cutting Edge	3/8" Grade 50
Wear Bars	3/8" Grade 50
Mounting Plate	5/16" HR Steel
Cutting Edge	3/4" x 6"
Step	Extruded Grips
Struck Capacity (cu. ft.)	(60" - 13.2) (68" - 15) (72" - 15.9) (78" - 17.5) (80" - 17.75) (84" - 18.5)
Heaped Capacity (cu. ft.)	(60" - 15.8) (68" - 18) (72" - 19) (78" - 20.5) (80" - 20.12) (84" - 22.25)
Weights (Lbs.)	(60" - 565) (68" - 605) (72" - 620) (78" - 665) (80" - 705) (84" - 730)



Features:

- Heavy duty low profile design
- Versatile bucket for tough digging and material handling
- Loosen hard-pack dirt
- Replaceable teeth
- Excellent cutting edge visibility
- High break out force
- Painted using a 2 part Urethane process for an exceptional finish